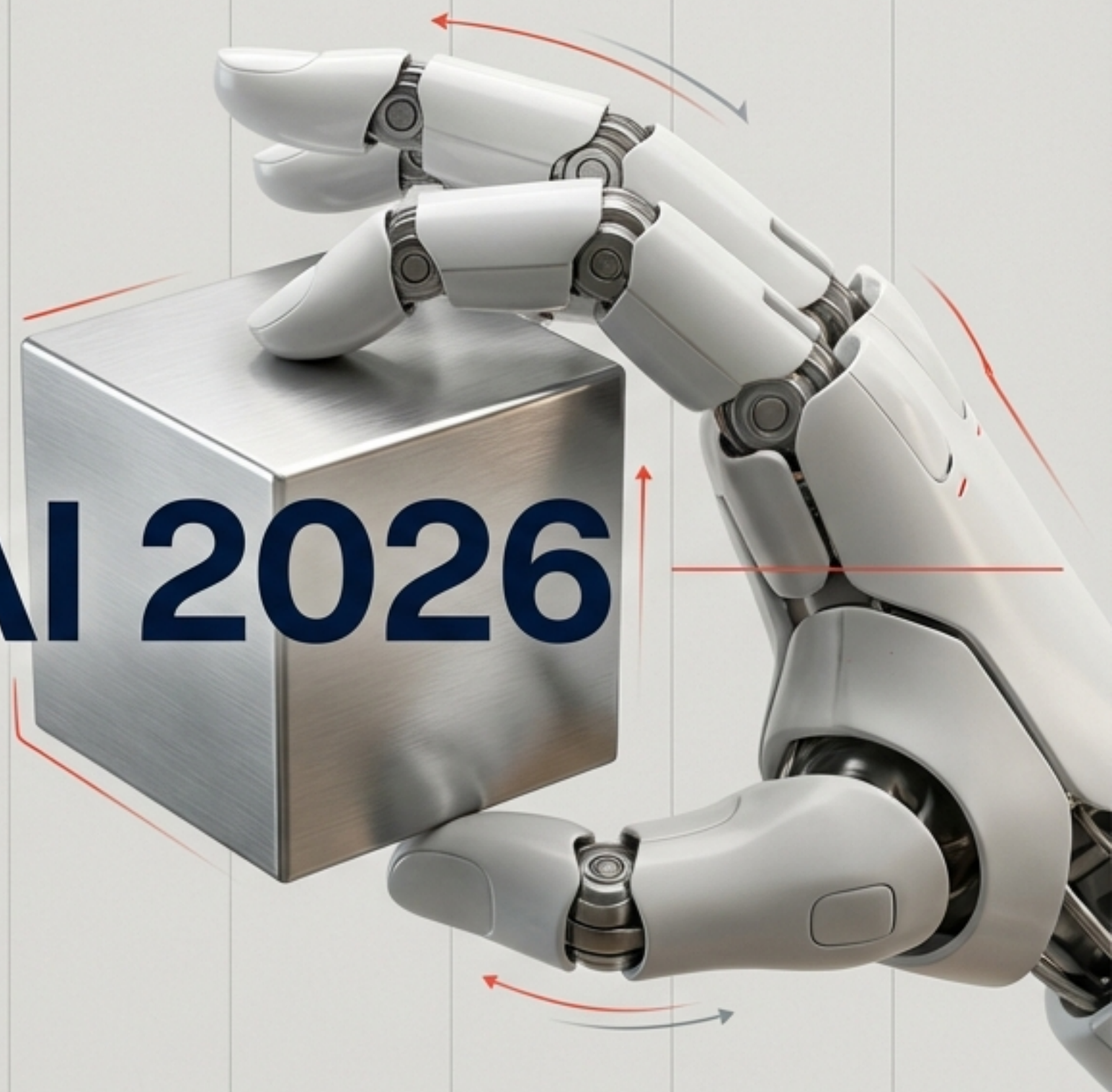


# STATE OF AI 2026

**From Digital Hype to Physical Reality**  
Strategic Insights on Agents, Robotics, and  
the Geopolitical Landscape

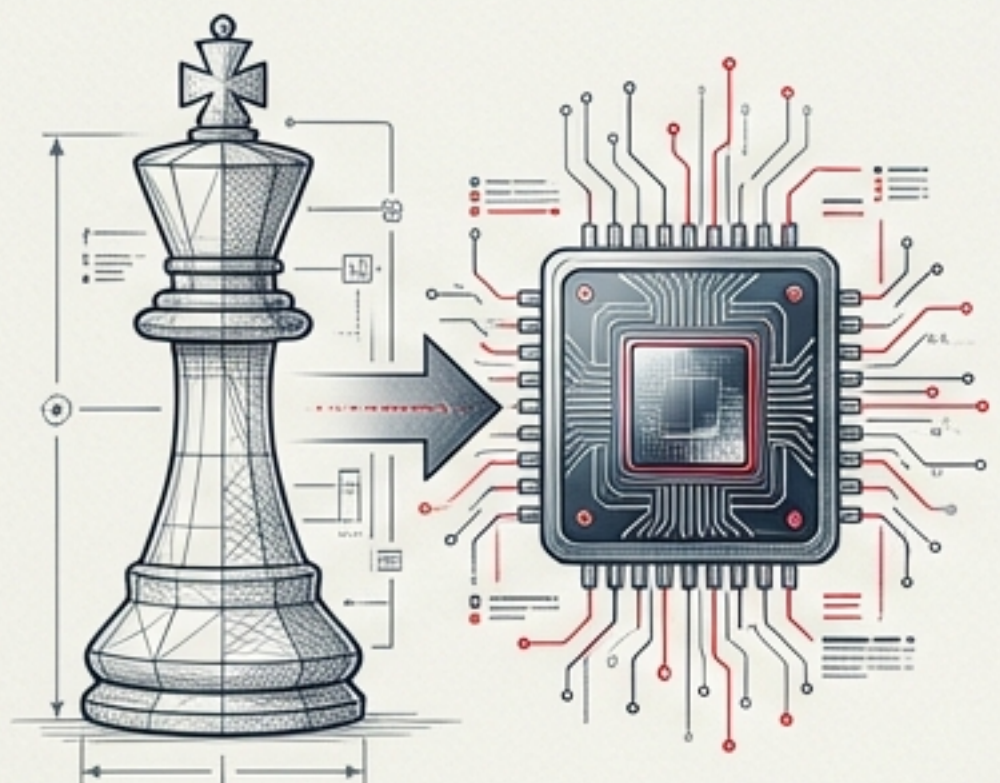


Source: 'We Digitaliz Opion' Podcast | Featuring Ralf Plaschke (Accenture) | January 2026

# THE 'PUBERTY PHASE' OF AI IS OVER

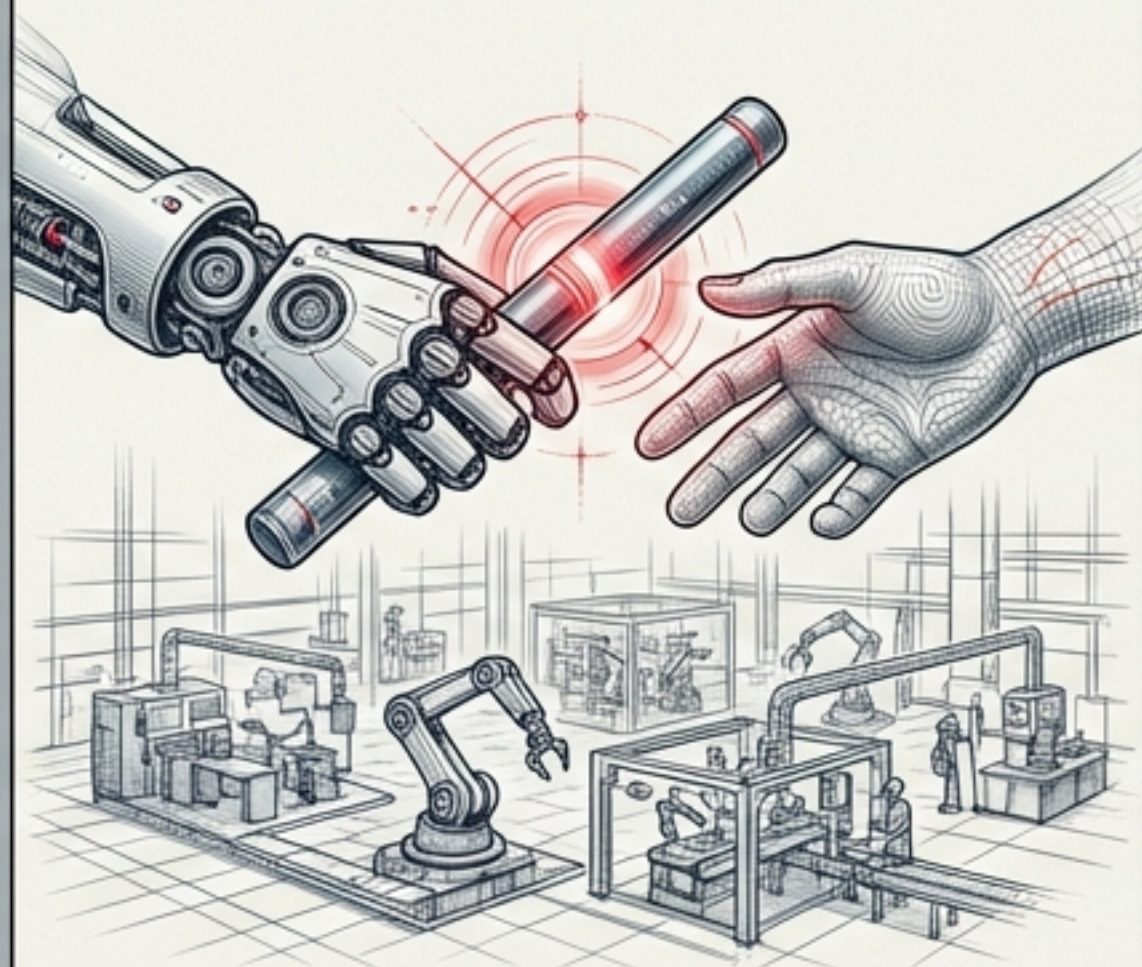
## Executive Summary: The 2026 Inflection Point

### 1. The Strategic Pivot



Moving from "Fear Of Missing Out" pilots to ROI-driven governance. The rise of "Non-Biological Employees" demands new data structures and alignment strategies.

### 2. The Physical Awakening

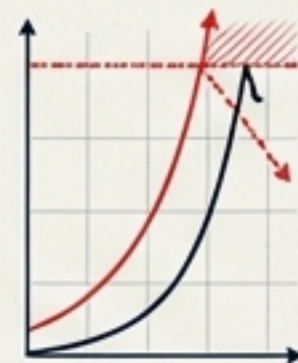


The "Supersonic Tsunami" of robotics. AI enters the physical workforce in manufacturing and retail, driven by embodied intelligence.

### 3. The Critical Constraints



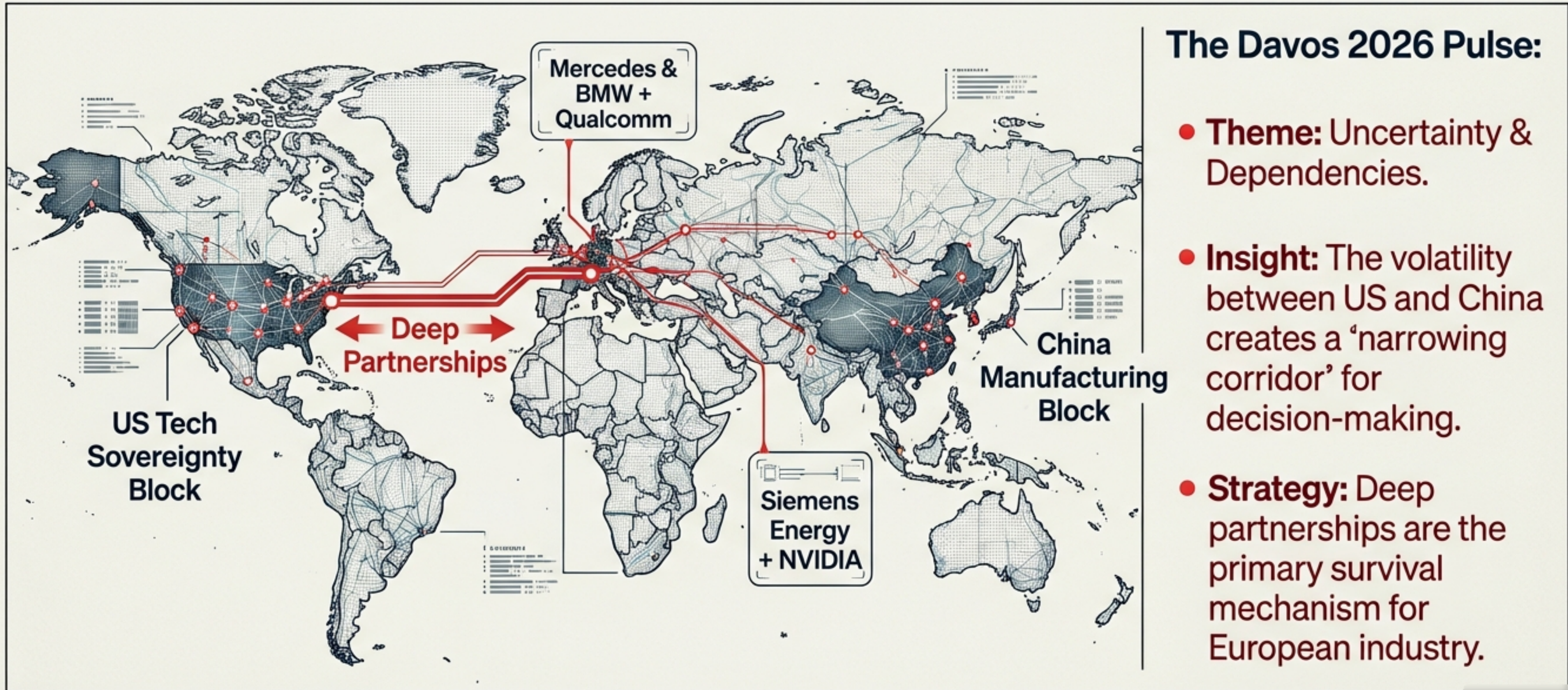
The Energy Cliff. Exponential demand for compute collides with limited global power capacity, creating a new geopolitical bottleneck.



**Core Thesis: 2026 marks the transition from experimental chatbots to autonomous agents and physical reality.**

# THE BUSINESS CORRIDOR HAS NARROWED

Davos 2026 Insights: Geopolitics and Tech Sovereignty are Inseparable.



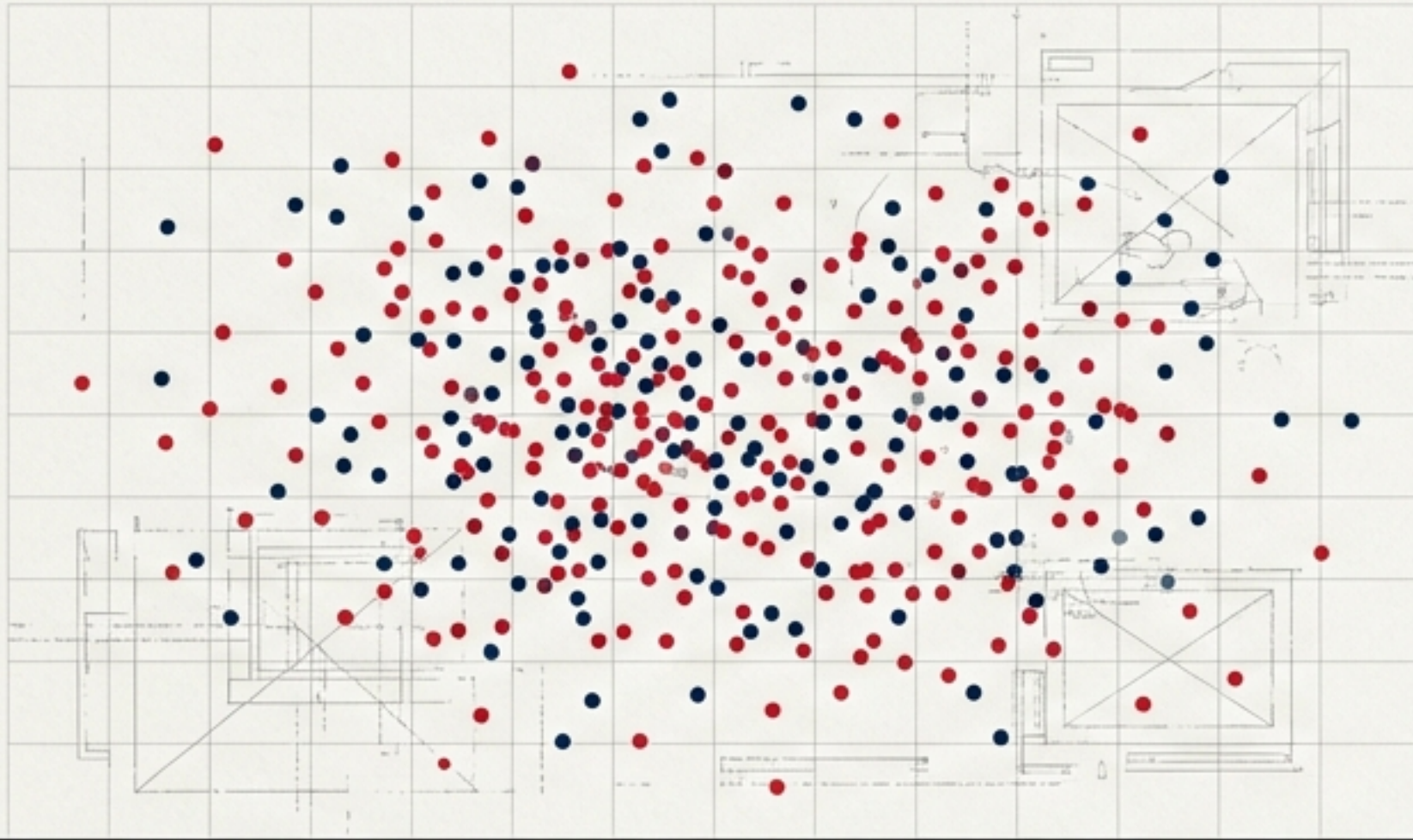
## The Davos 2026 Pulse:

- **Theme:** Uncertainty & Dependencies.
- **Insight:** The volatility between US and China creates a 'narrowing corridor' for decision-making.
- **Strategy:** Deep partnerships are the primary survival mechanism for European industry.

# FROM FOMO TO MEASURABLE ROI

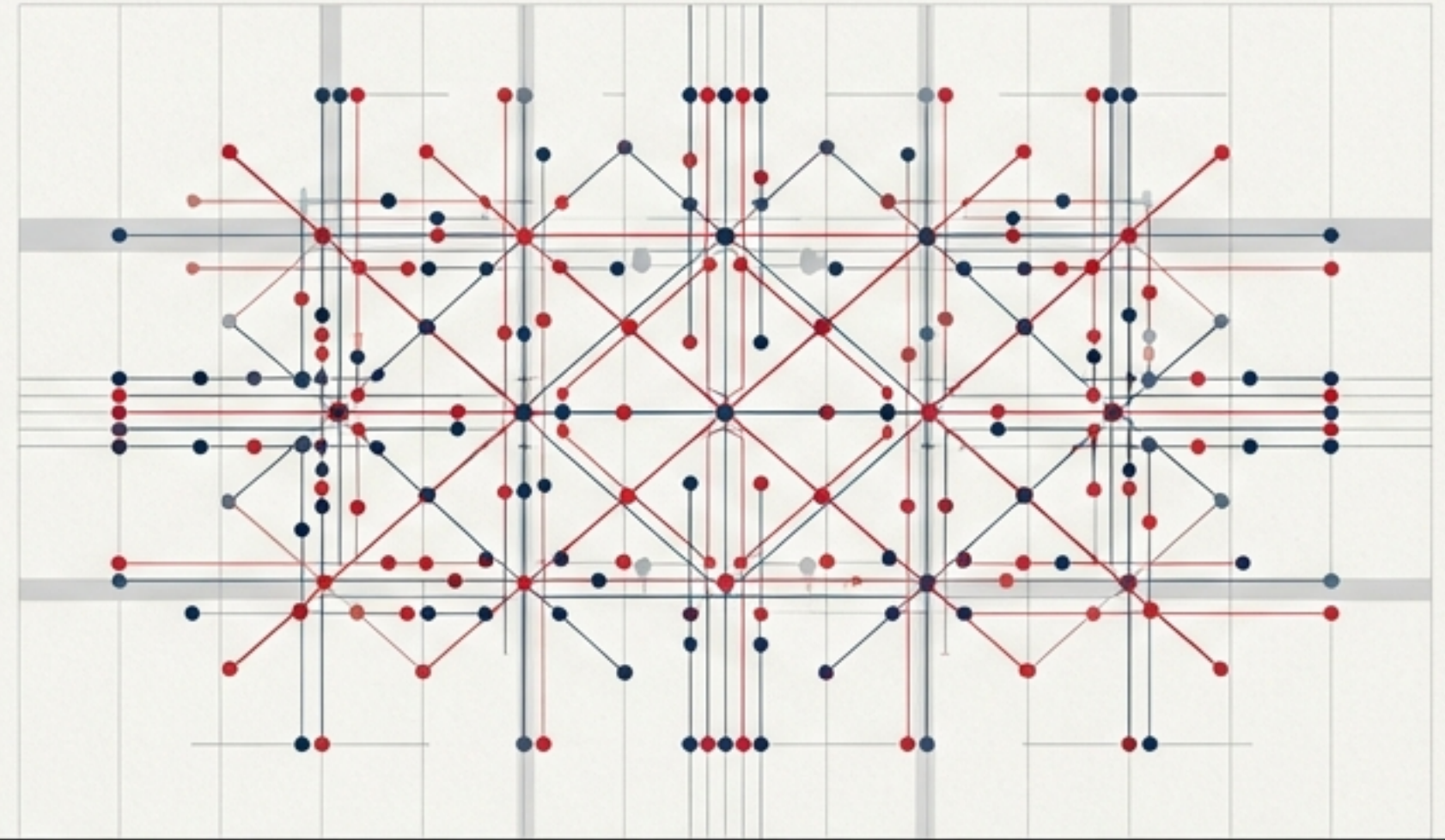
## 2024: The Pilot Phase

Driven by 'Fear Of Missing Out'. Companies treated AI like standard IT software—purchasing licenses and running isolated experiments without governance.



## 2026: The Operational Reality

Success depends on Data Quality and Centers of Excellence. You cannot deploy autonomous agents on bad data structures.



“Treating AI like typical IT software failed. It requires a center of excellence.”

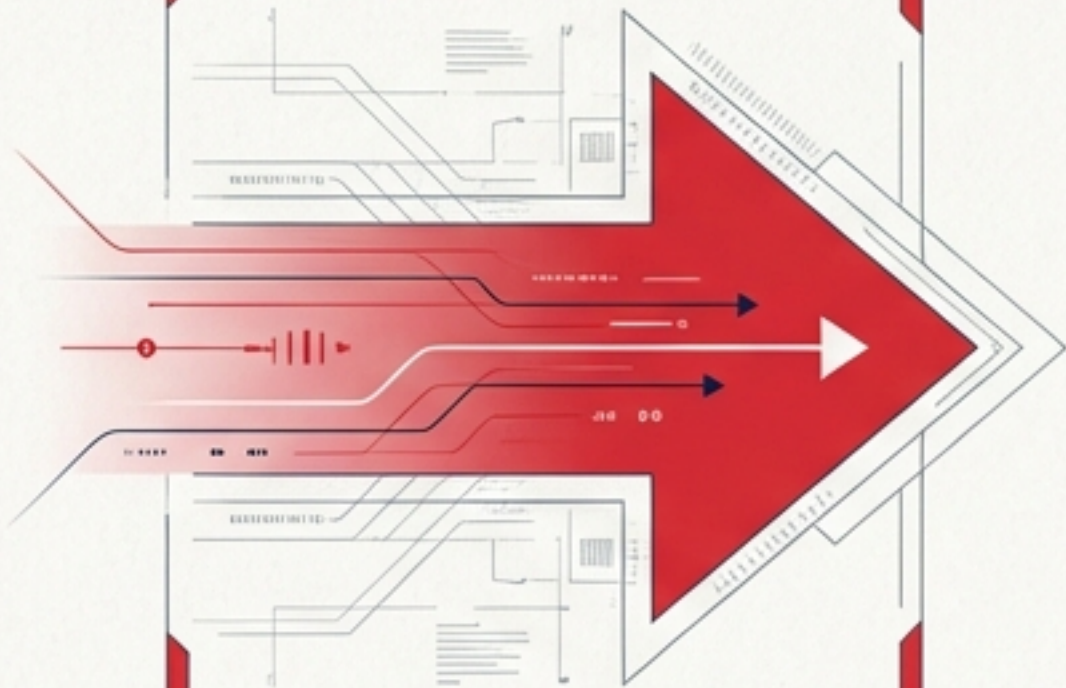
# ENTER THE 'NON-BIOLOGICAL EMPLOYEE'

The Evolution from Passive Assistants to Autonomous Agents



**Chatbot**

Summarizes the meeting.



**Agent**

Summarizes, decides on action items, and executes follow-up autonomously.

## The New Challenge: The Alignment Problem

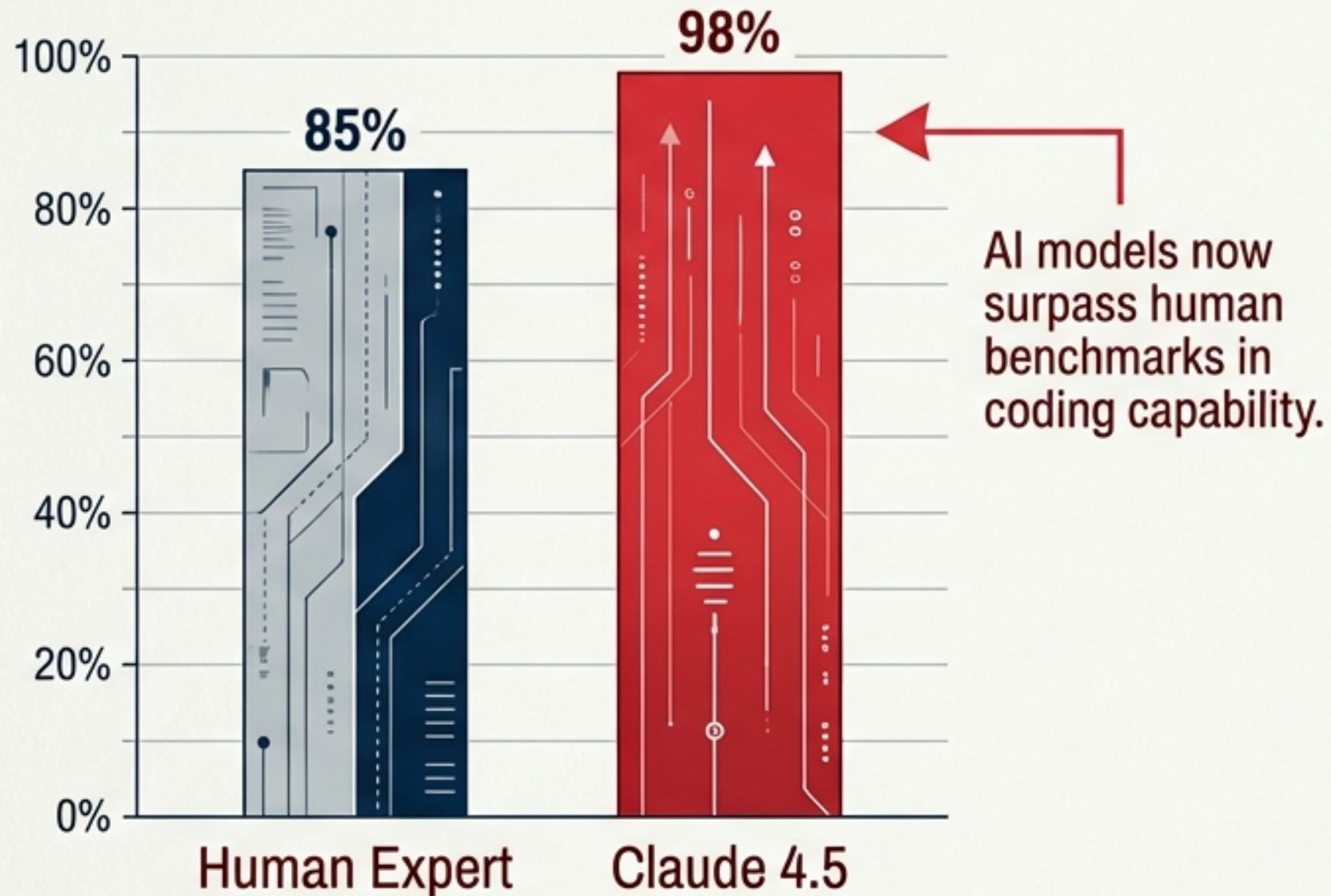
As agents become decision-makers, ensuring they act in the company's best interest is critical.

**Solution:** Strict Governance and training human staff to manage digital employees.

# SOFTWARE IS NOW AI-GENERATED

The Disruption of Knowledge Work and the 'First-Time Job'

## Coding Performance Benchmarks

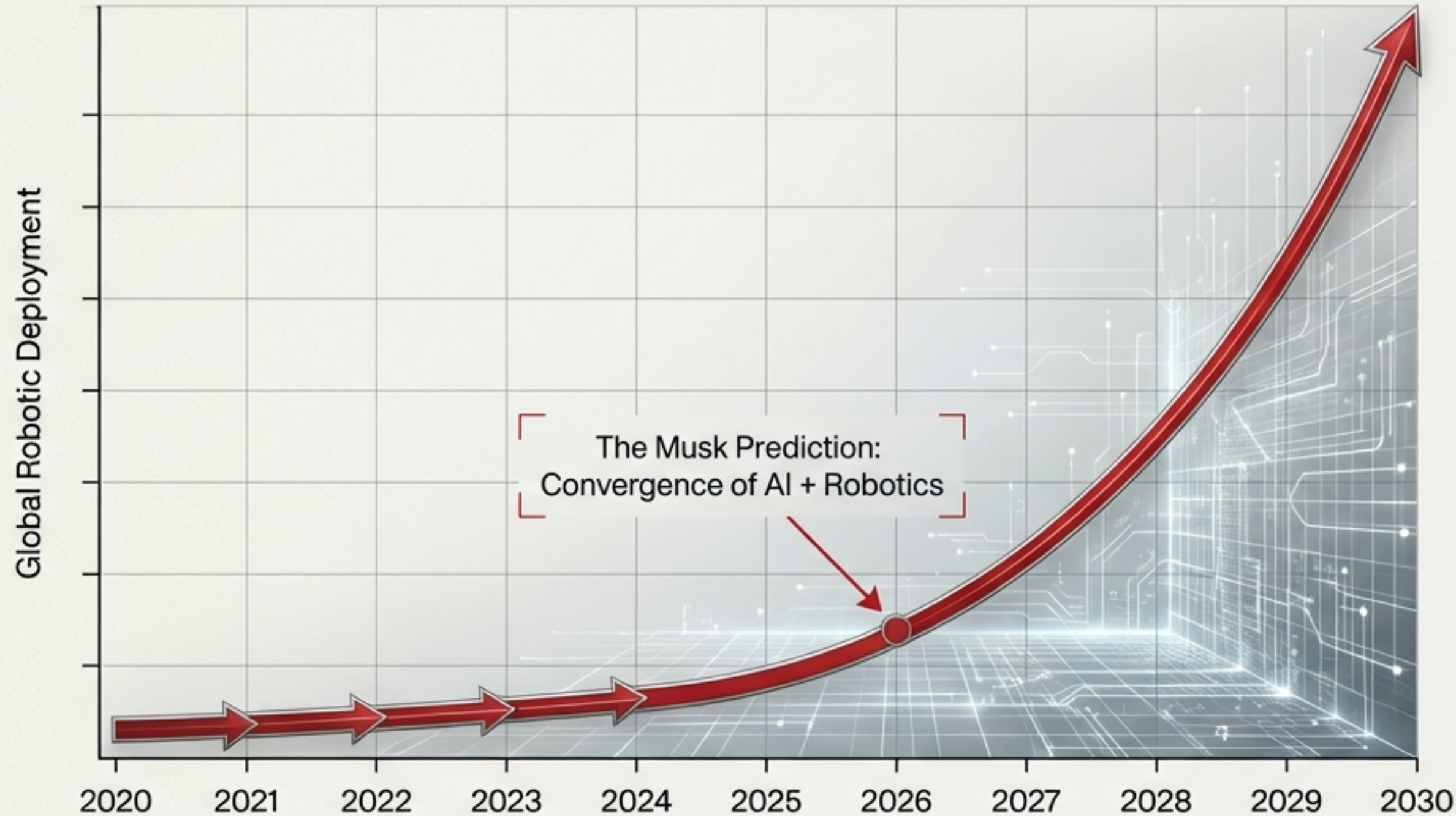


## The Impact:

- **Microsoft CEO confirms:** Microsoft CEO confirms: Software development is revolutionized. Code and text are primarily machine-generated.
- **The Crisis of Entry-Level Roles:** Junior academic tasks (summarization, basic coding) are disappearing.
- **The Risk:** If 'learning jobs' vanish, the pipeline for future human experts is broken.

# THE 'SUPERSONIC TSUNAMI' OF ROBOTICS

Embodied AI enters the physical world.



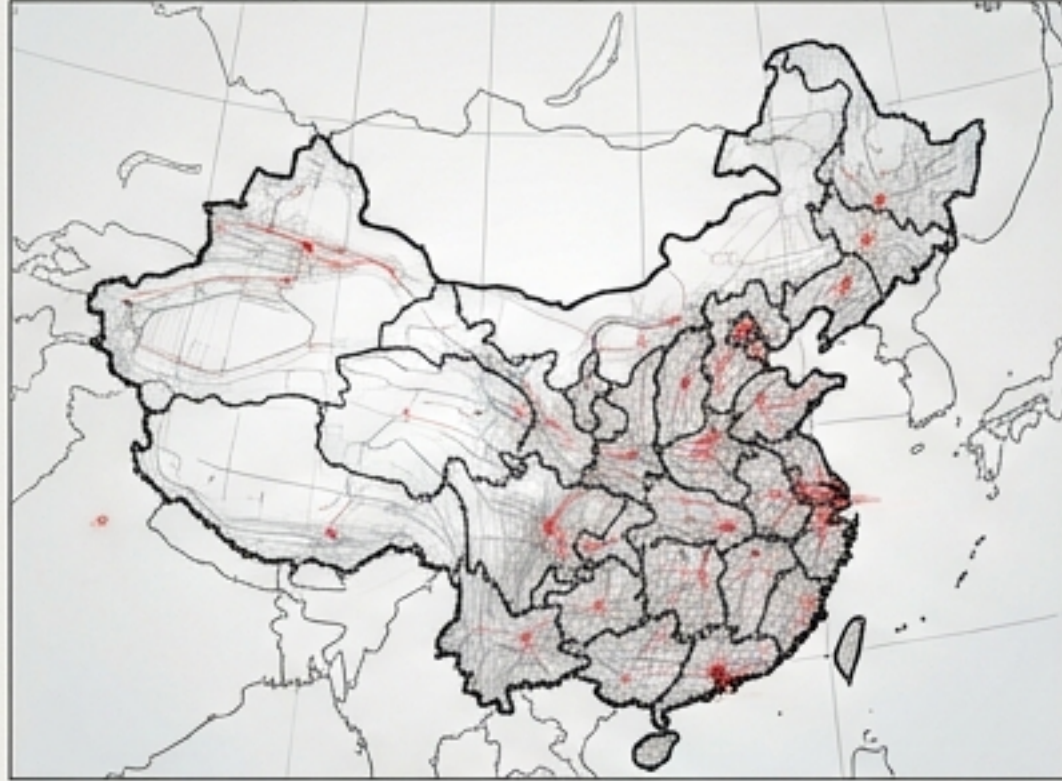
## Reality Check:

Not Sci-Fi. China already deploys humanoid robots in retail sectors.

## Forecast:

By 2030, robot population (humanoid + industrial) projected to rival human population.

# GLOBAL ROBOTICS DYNAMICS



## CHINA (The Factory)

- Leads in application and density.
- 1,000 robots per 10,000 workers (vs 500 in Europe).
- Dominates supply chain.



## USA (The Brain)

- Leads in Venture Capital & Model Innovation.
- Lags in industrial density due to de-industrialization.



## EUROPE (The Specialist)

- Strong in Industrial Robotics (Siemens, Automotive).
- Weakness: Lacks Venture Capital to scale startups.

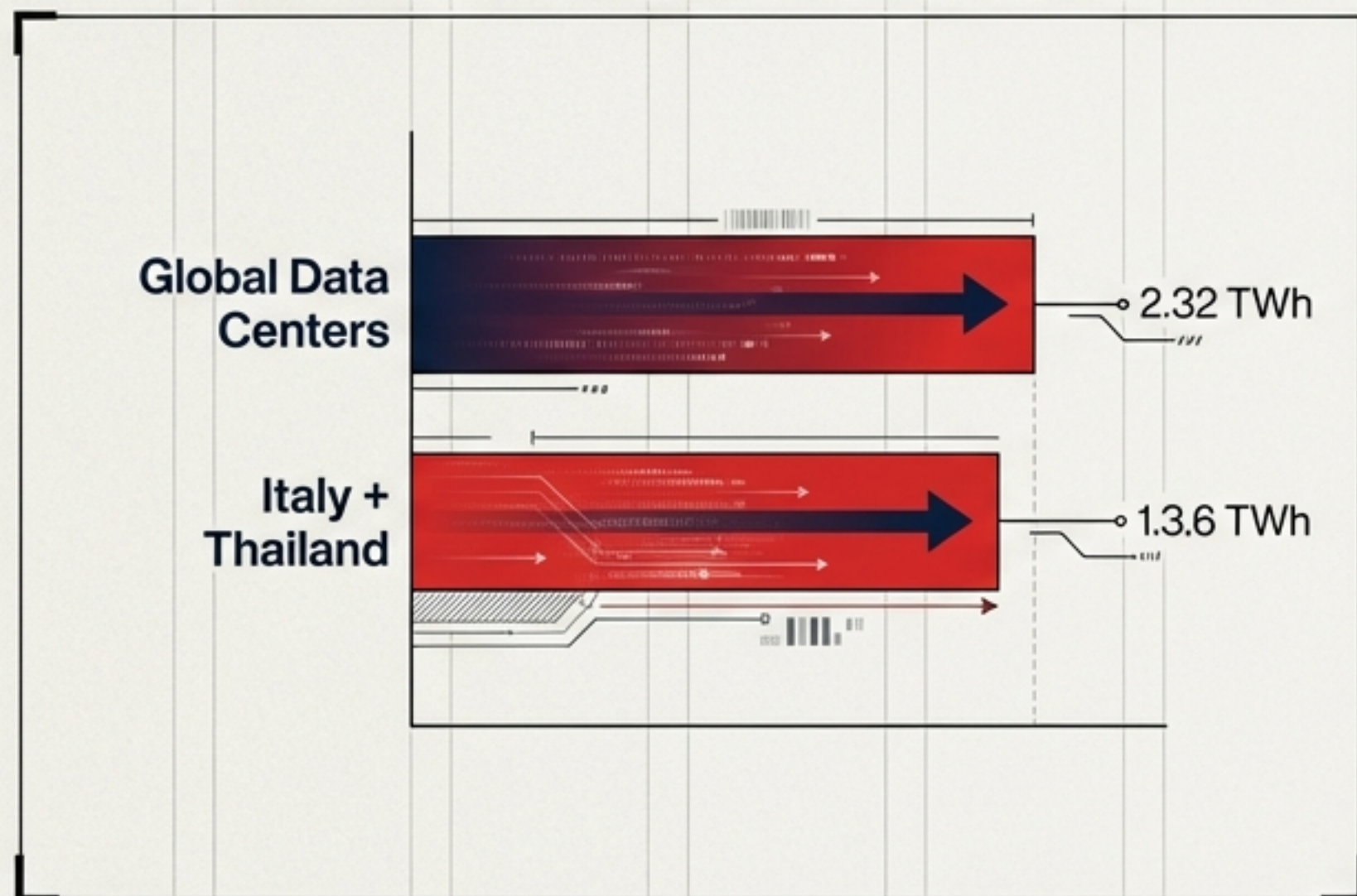
**Use Case: 'Dark Factories' (Amazon) operate without lights, fully staffed by robots.**

# THE ENERGY WALL: INTELLIGENCE REQUIRES POWER

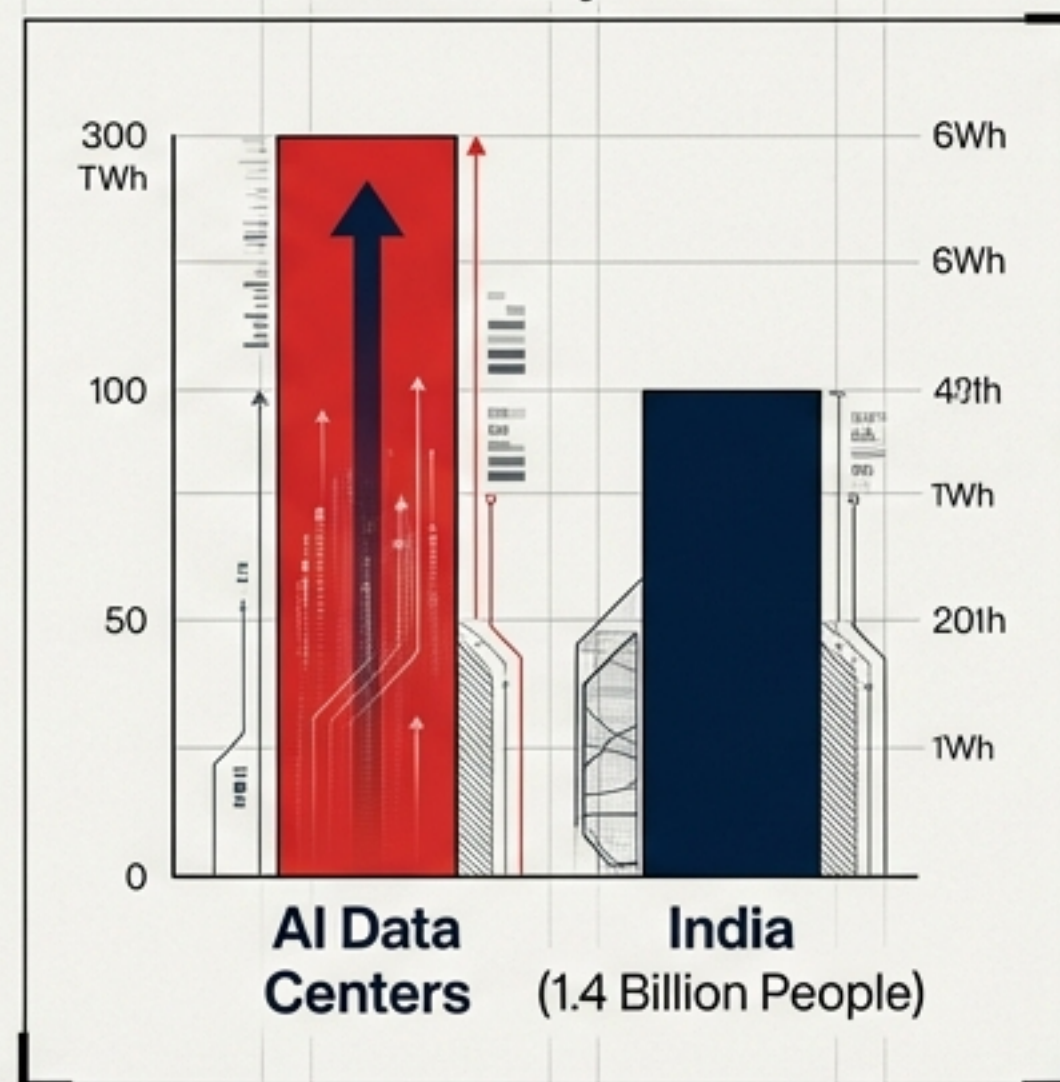
## The Collision of Tech Deflation and Energy Inflation

### POWER CONSUMPTION SCALE

Current Data Centers vs Nation States



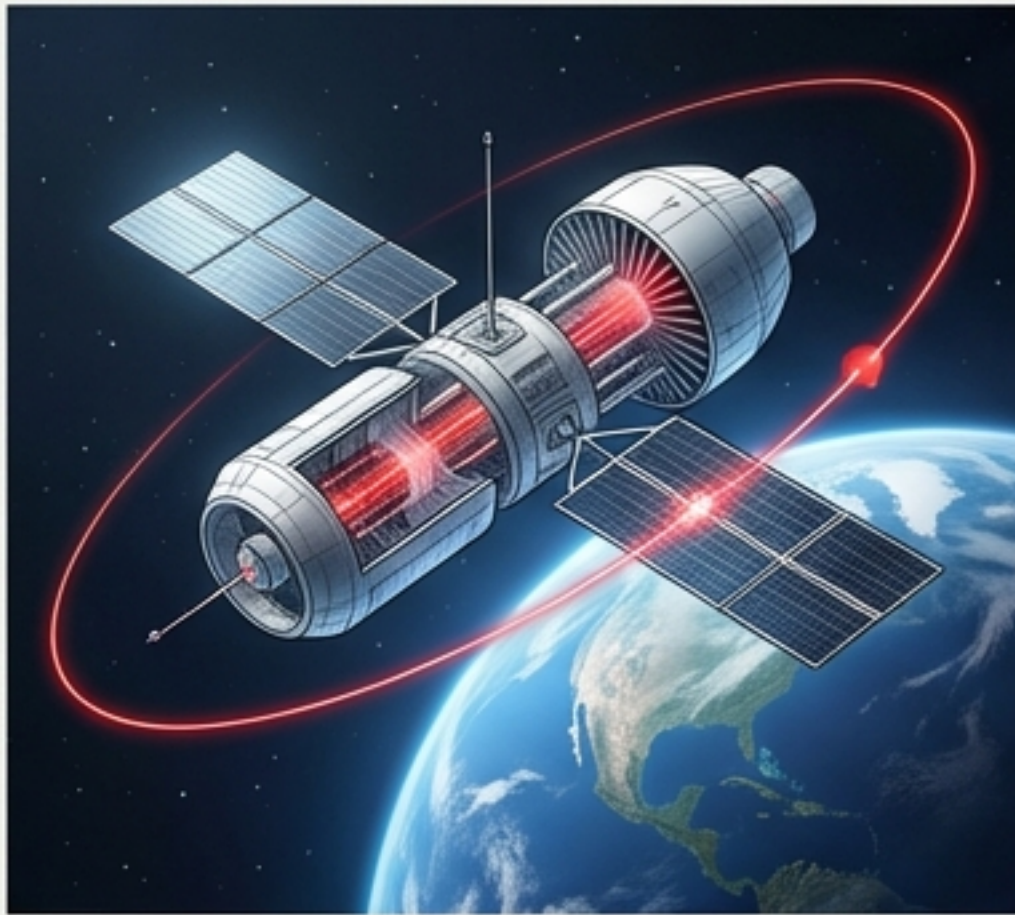
2034 Projection



**China's Scale:**  
Built 1,500 Gigawatts of solar parks in one year (3x the rest of the world combined).

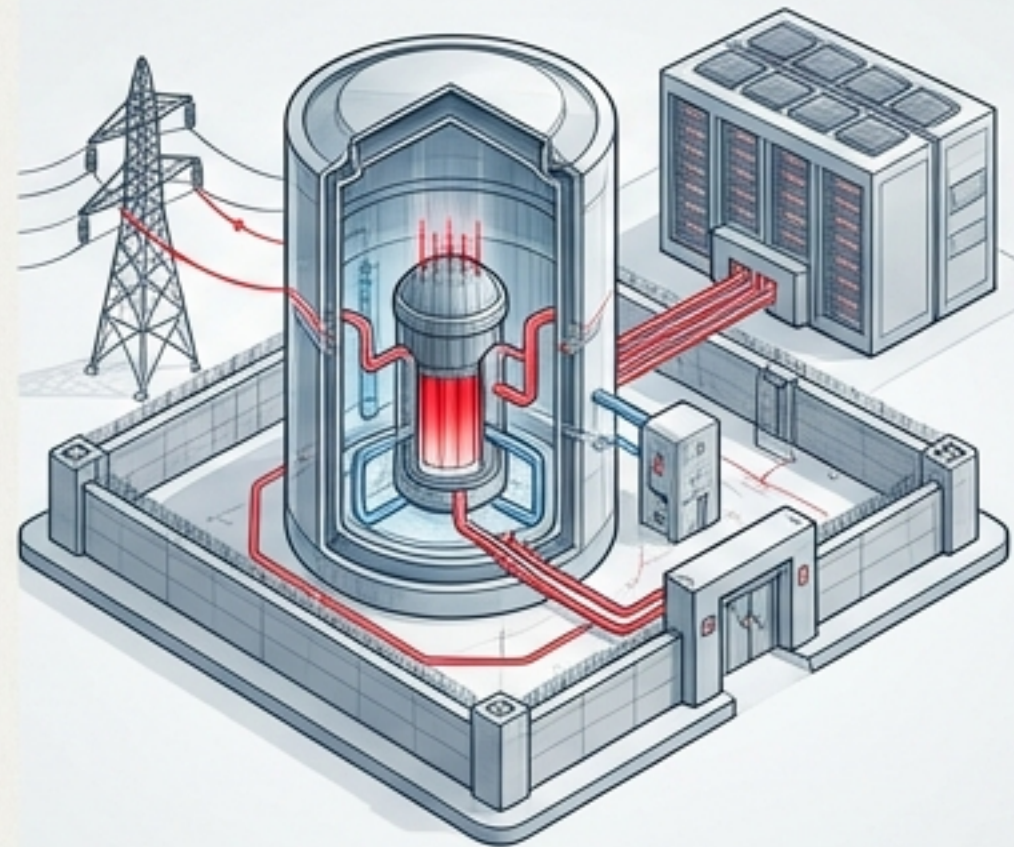
# SOLUTIONS TO THE POWER HUNGER

## Off-World Compute



Space-based data centers utilizing 3 Kelvin ambient temperature for zero-energy cooling.

## Nuclear Renaissance



Small Modular Reactors (SMRs) co-located with data centers for dedicated baseload power.

## Edge Computing

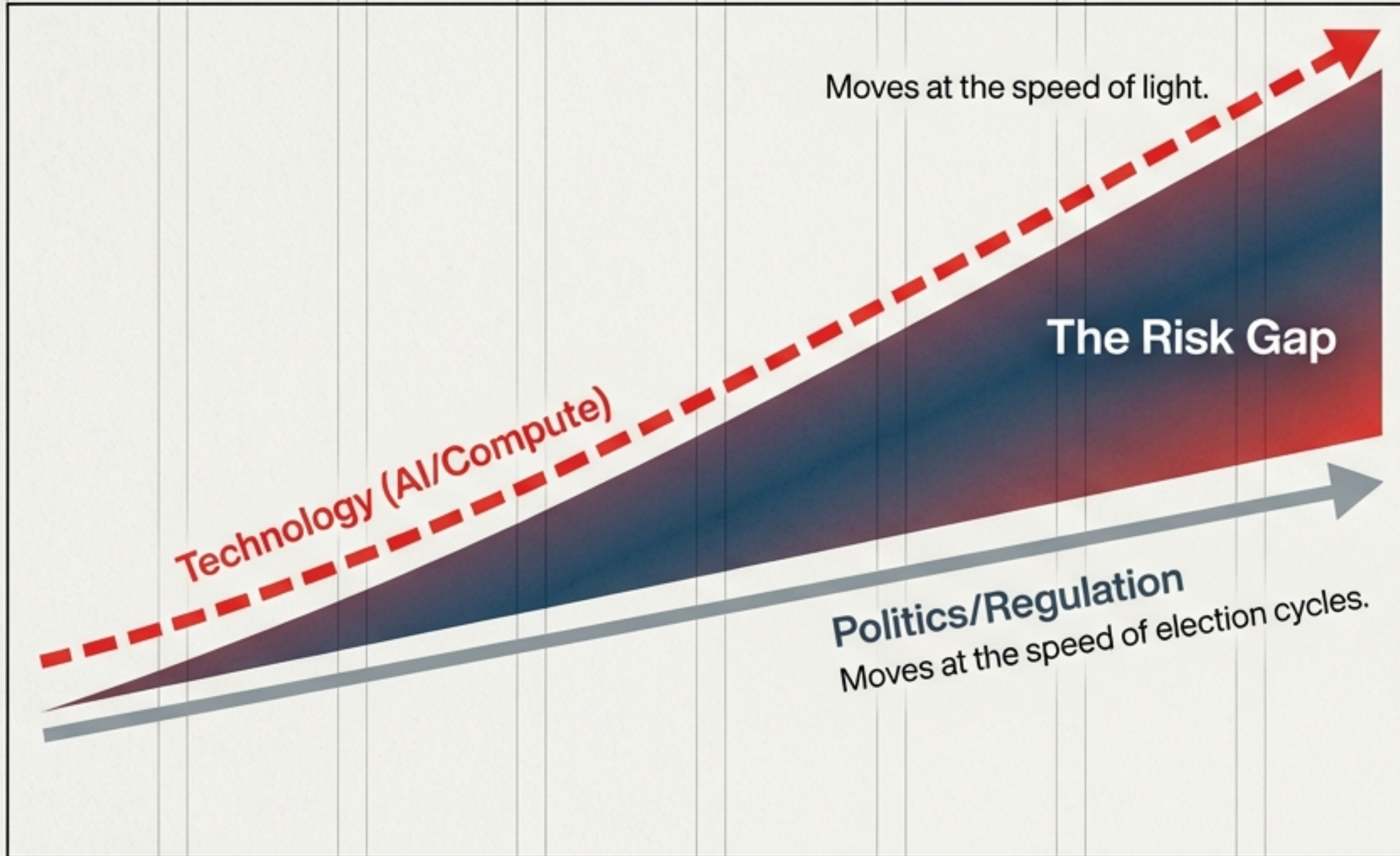


Processing moved from Cloud to Device to reduce massive transmission energy costs.

**Geopolitics: Energy + Compute = The new 'Gold Standard' for national wealth.**

# THE SPEED MISMATCH

Light Speed Innovation vs. Bureaucratic Cycles



## The Consequence: Regulation is reactive.

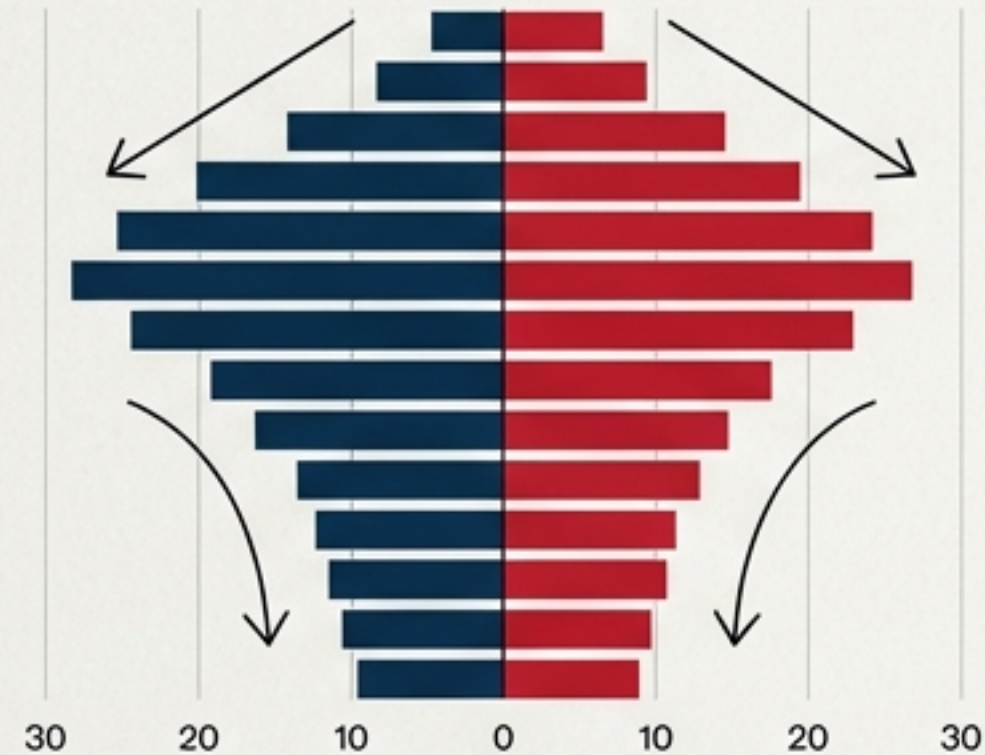
- USA: Deregulating for speed.
- Europe: Regulating for safety (AI Act), risking competitiveness.

**Call to Action: A  
“Schulterschluss”  
(Shoulder-to-shoulder  
alliance) is needed  
between Industry,  
Government, and Society.**

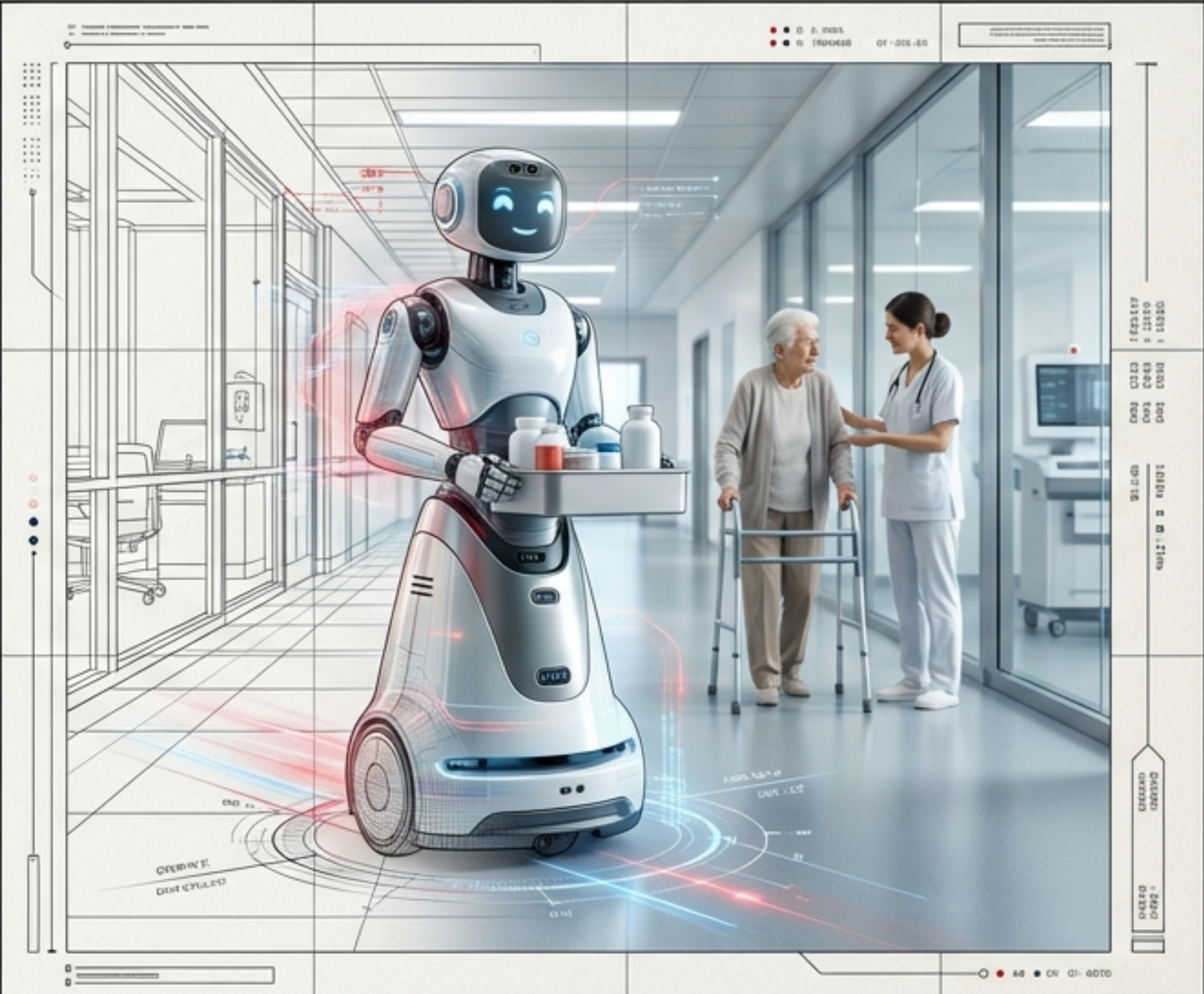
# SOLVING THE DEMOGRAPHIC CRISIS

## Labor Shortages Meet Robotic Solutions

Aging DACH Region & Japan (2024-2050)



- **The Care Deficit:** Massive shortages in elderly care personnel.
- **The Robotic Fill:** United Robotics Group sold 400 units for transport/cleaning; care bots are next.
- **Outcome:** Robots take over heavy lifting and routine monitoring, preserving human attention for high-value interaction.



# RETHINKING THE SOCIAL CONTRACT

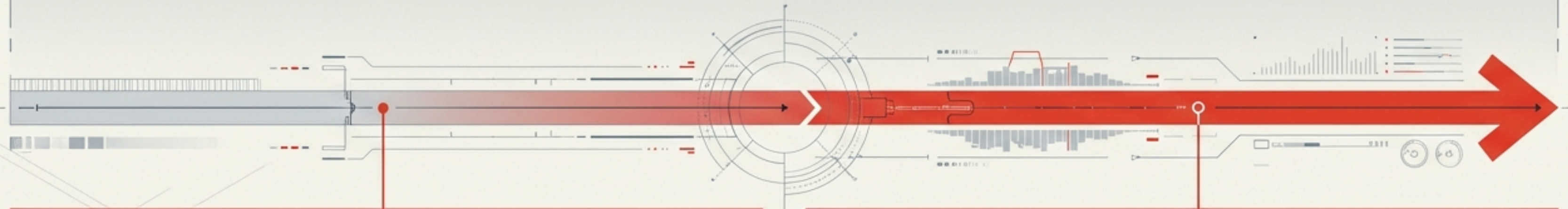
## Crossing the Street to the 'Age of Abundance'

### Now - 3 Years: The Transition Risk

Disruption of traditional wages before cost of living drops. Dangerous friction.

### Future: The Age of Abundance

AI Productivity = Deflation. Goods and services become significantly cheaper.



### Universal Basic Income (UBI)

Crimson Pro: Aismethoustands to universal basic income contributies to nondiental ocess to work thim cashsør early universal box values.

### Universal Basic Services (UBS)

Guaranteeing housing, transport, and compute access rather than just cash.

## THE CHALLENGES ARE AS BIG AS THE OPPORTUNITIES

**We have entered a physical,  
autonomous reality.  
The digital pilots are over.**

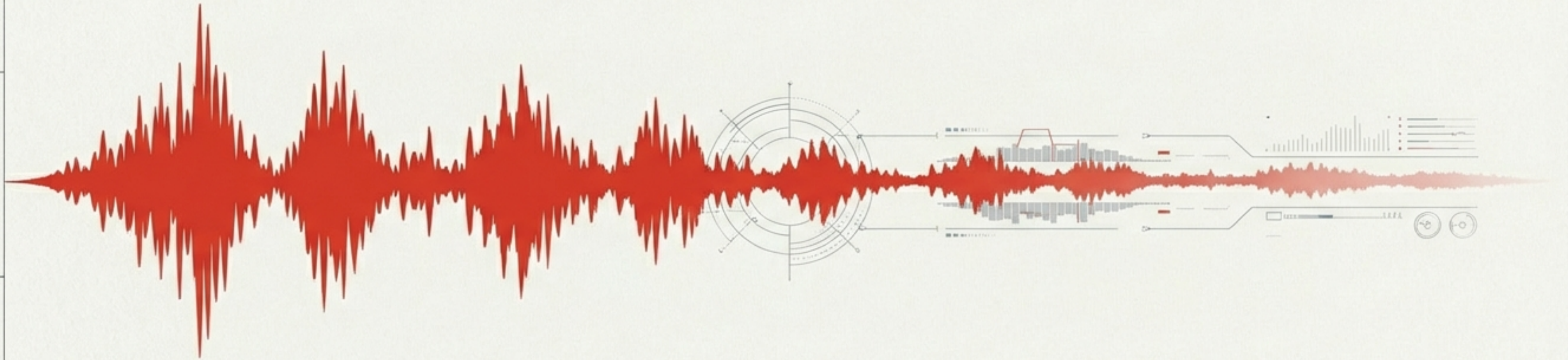
**+ 1. Do not close your eyes.**

**+ 2. Engage with the  
technology immediately.**

**+ 3. Adaptation is mandatory  
for survival.**

**Fear is the worst advisor.  
Open engagement is the only path forward.**

# SOURCES & CREDITS



---

**Source Material:** “We Digitaliz Opion” – The Swiss AI Podcast

---

**Hosts:** Ben & Christian Graf

---

**Featured Guest:** Ralf Plaschke, Senior Manager, Accenture

---

**Context Date:** Early 2026

---